



**HYATT**  
REGENCY

# HYATT REGENCY PARIS ETOILE 2018 Transformation

July 2018 | Confidential & Proprietary

In 2018, new hotel...

...but same views.



Your point of view on Paris has changed.

## **Meet Paris at the Hyatt Regency Paris Etoile.**

After more than 2 years of renovation (16 November 2015 – 30 June 2018), the Hyatt Regency Paris Etoile is now completely transformed, with bright, contemporary spaces created by architect George Wong.

This transformation encompasses all public areas, rooms and Suites, all meeting spaces, the lobby restaurant, the Regency Club™ lounge, as well as the 34th's floor panoramic bar.

# New lobby





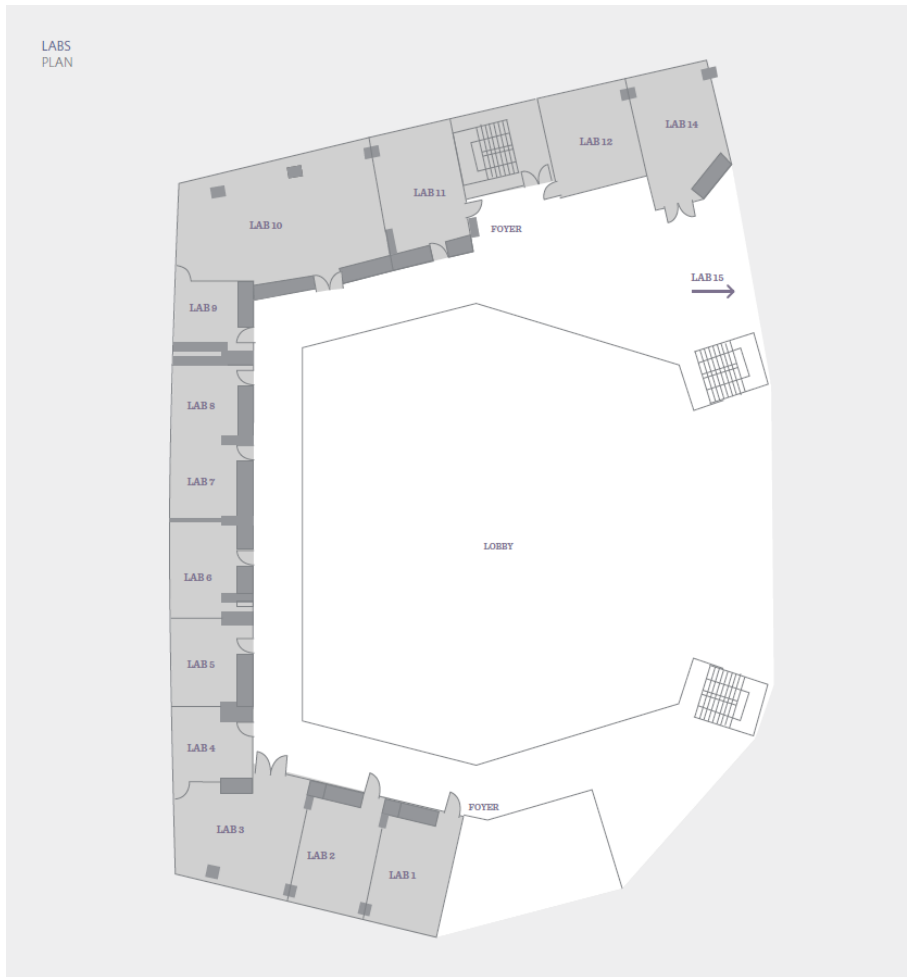
# 3500m<sup>2</sup> of meeting spaces

## 14 Regency ballrooms



# 3500m<sup>2</sup> of meeting spaces

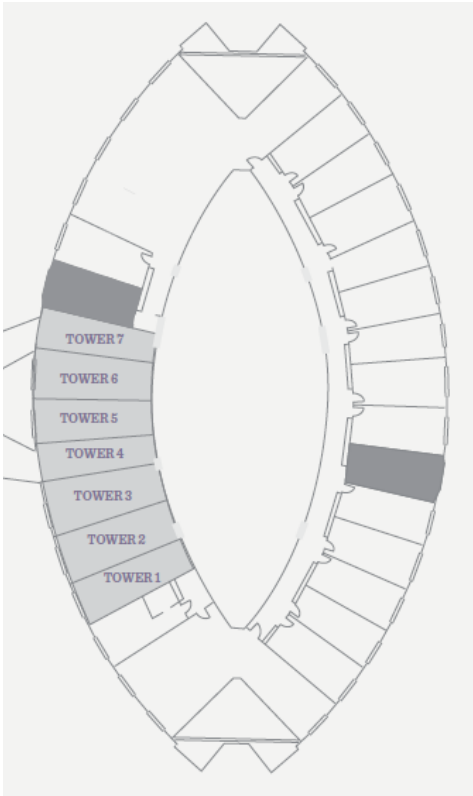
## 13 Labs



# 3500m<sup>2</sup> of meeting spaces

---

## 7 Towers



# 995 rooms

---

## 241 Standards (54 with Eiffel Tower views)





# 995 rooms

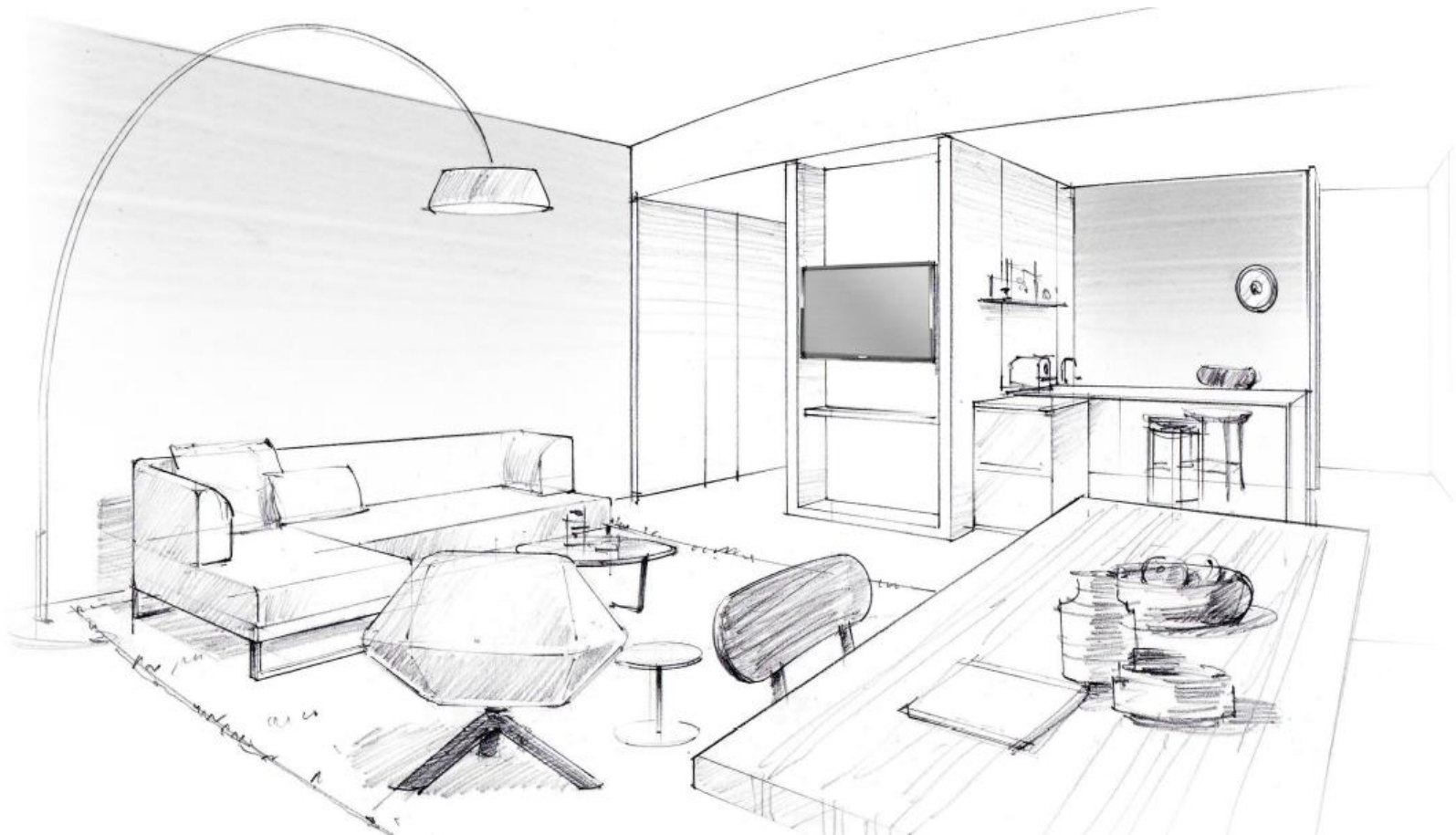
**677 Deluxe (183 with Eiffel Tower views), 56 Clubs and 13 Regency Suites**





# 995 Rooms

## 2 Regency Executive Suites (70 sqm)



# 995 Rooms

## 4 Lofts (40 to 60 sqm)



# 995 Rooms

## Presidential (102 sqm)





# Brand new Regency Club, on the hotel's top floor

---





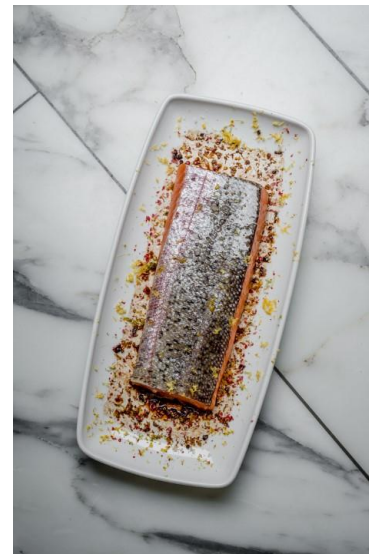
# Fitness Center (24/7, in-house guests only)



# MAYO & MAYO C'est Prêt



Boire,  
Manger,  
Partager.





# WINDO – Cocktails & Champagne bar above Paris

Re-opening Q4 2018



# In a nutshell

---

- **Ideal location**

- A few steps away from La Défense business district and the Champs Elysées
- Connection to the Palais des Congrès's shopping center and entertainment facilities
- Easy access to transportation (Subway line 1, RER C and shuttles to airports)

- **Everything under one roof**

The hotel is directly connected to the Paris's convention center, including shops, restaurants and bars, movie theatre, and direct access to public transportations (RER, subway)

- **Breathtaking views**

The hotel is the 3<sup>rd</sup> tallest building in Paris and offers amazing panoramas over the city.

- **Large meeting spaces completing the Paris's Convention Center**

- Up to 3500 sqm
- From 5 to 1800 participants in the same space
- Only on-site catering linked to the Palais des Congrès



A decorative graphic in the top-left corner of the slide. It consists of a dark purple square with a repeating pattern of light purple circles. A diagonal line extends from the bottom-right corner of this square across the upper portion of the slide.

THANK YOU