



HYATT REGENCY MERIDA

 **HYATT
REGENCY**

LOCATION

Hyatt Regency Merida

August 2016 | Confidential & Proprietary

LOCATION

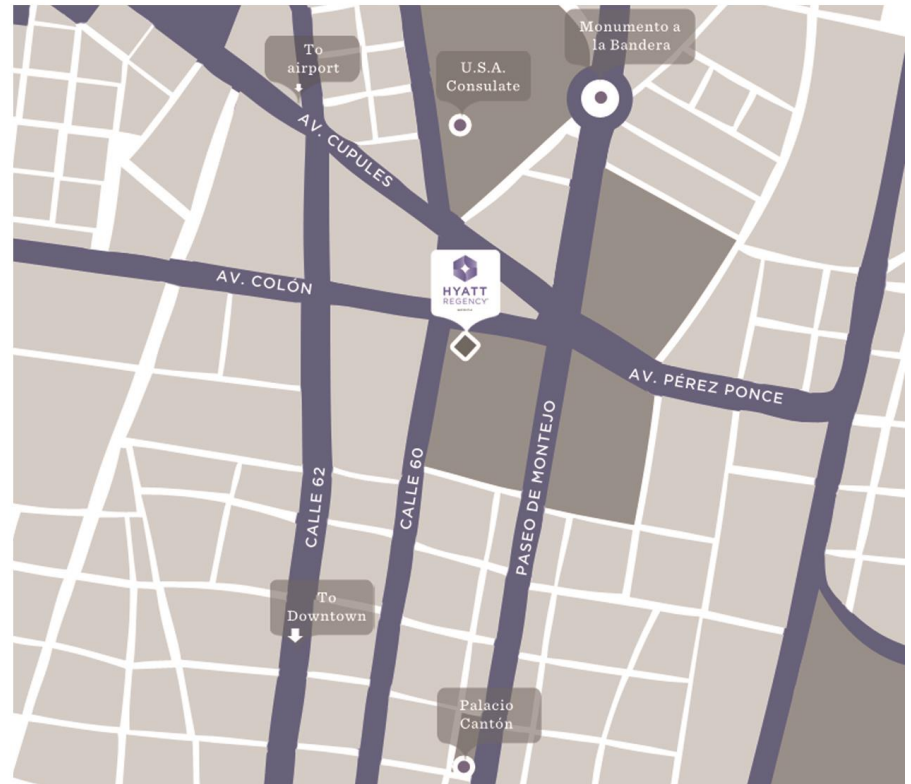
Located at the heart of Merida's business and commercial district and 100m from Paseo de Montejo. Merida is the capital of Yucatan, located in the south-east of Mexico, and historically rich region that is home to the ancient Mayan Culture

TRANSPORTATION

From	Distance	Time/By
Airport	10km	20min. by car
Downtown	2km	5 min. by car
Convention Centre	5km	10min by car
Shopping Centres	5km	10min by car

POINTS OF INTEREST

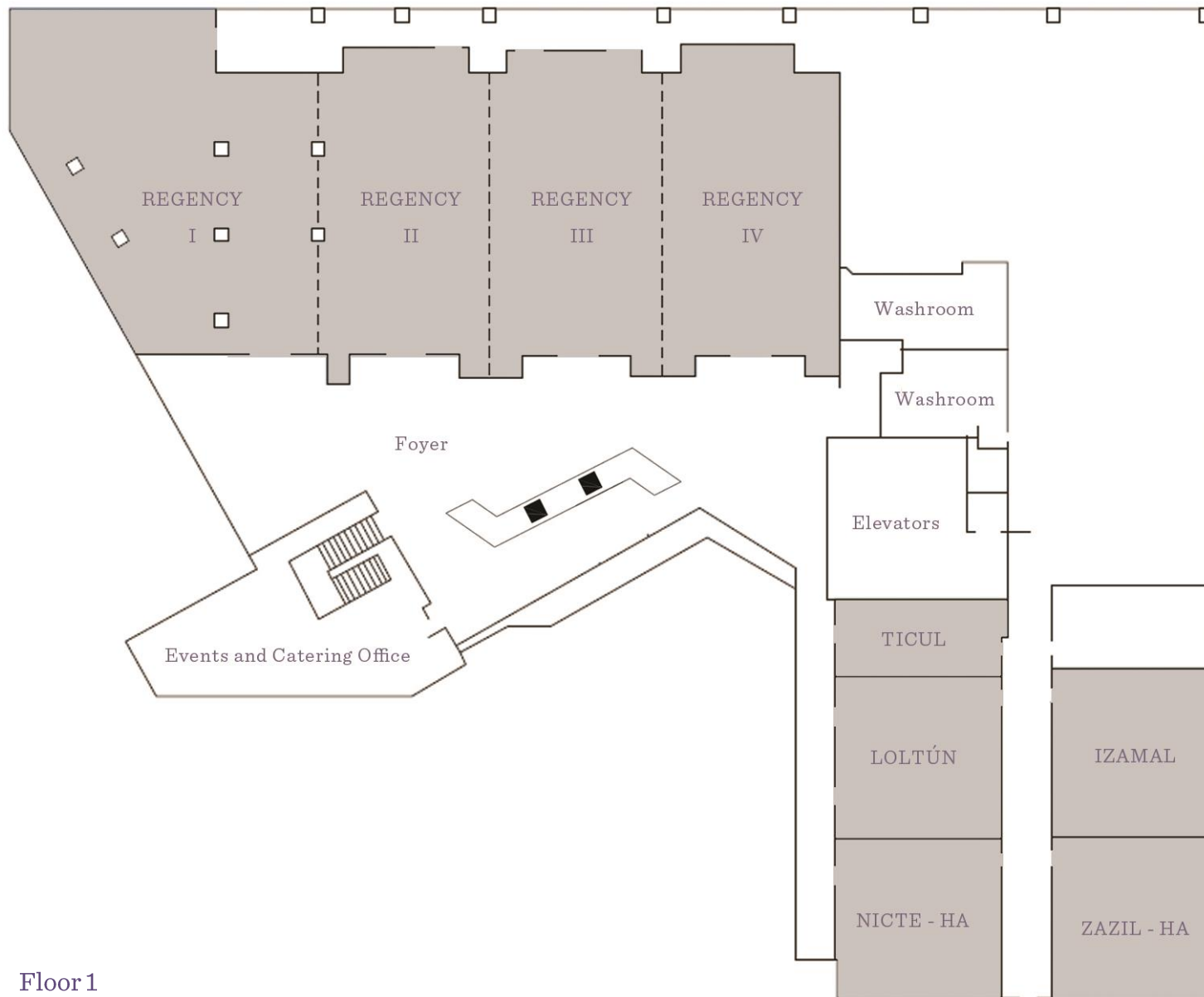
- *Uxmal y Chichen Itzá* - Mayan archaeological sites with spectacular evening light and sound shows.
- *Dzibichaltún* - Mayan site with underground rivers.
- *Balankanche and Loltún caves*
- *Progreso* - Quiet, seaside town close to Merida (25 minutes), with marina, water sports, beaches and several seafood restaurants.
- *Gran Museo del Mundo Maya* - 15 minutes from the Hotel (by car). You will get to know all about this great ancient culture
- *Downtown*
- *Haciendas*
- *Flamingo watching* - located at Uaymitún (40 minutes from Merida)
- *Country Club Golf Course*



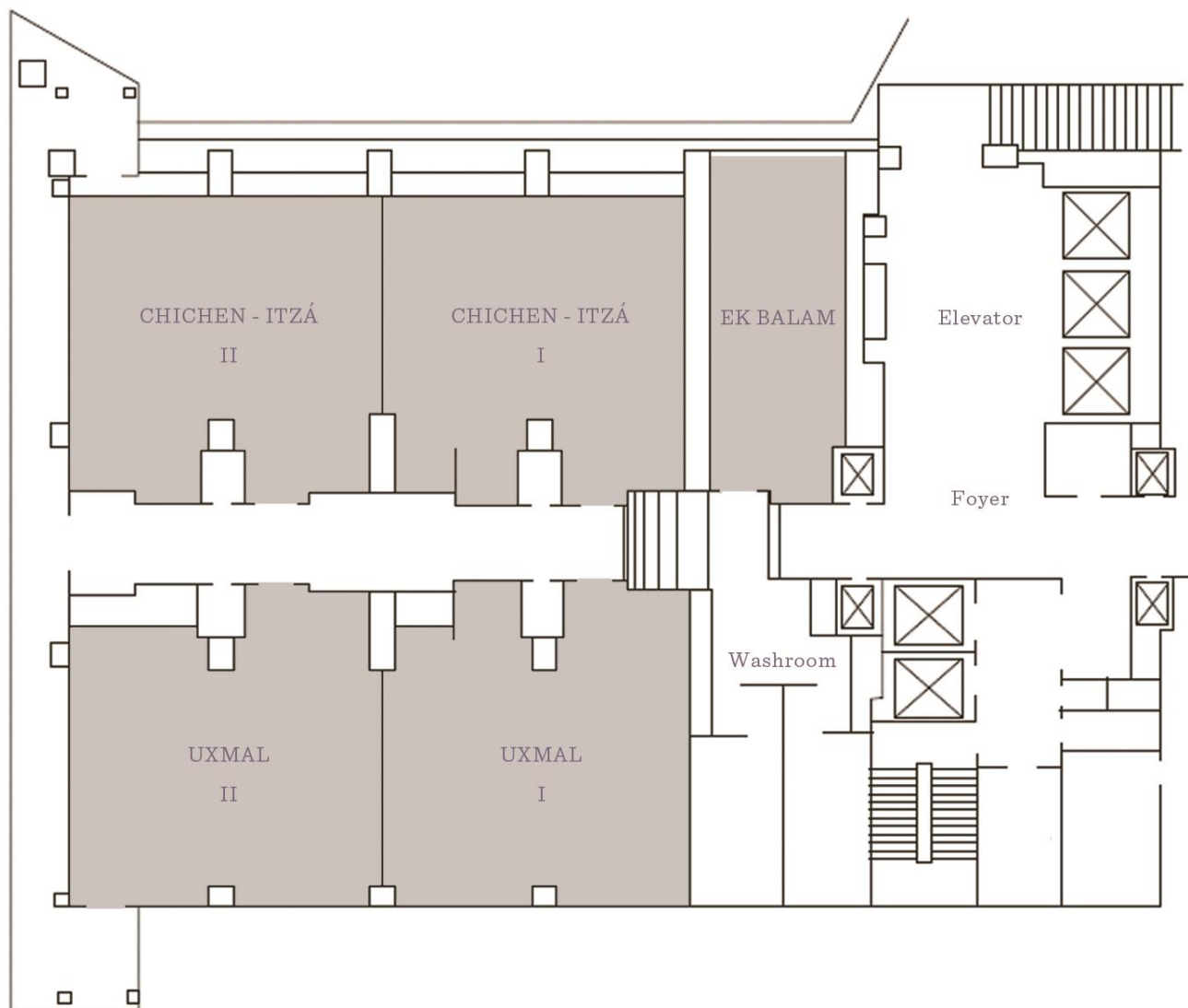
FLOOR PLANS & CAPACITY CHART

Hyatt Regency Merida

August 2016 | Confidential & Proprietary



Floor 1



Floor 2

DIMENSIONS AND CAPACITIES OF MEETING ROOMS



Meeting Room	Dimensions of the Room Lenght x Width x Height	Area	Banquet	Cocktail	Theatre	School	Imperial	U Shape	Russian
REGENCY	133.2 x 48.2 x 11.8 ft	6426 sqft	500	500	600	350	-	130	140
<i>Regency 1</i>	45.9 x 48.2 x 11.8 ft	2217 sqft	150	150	150	90	-	40	46
<i>Regency 2</i>	28.2 x 48.2 x 11.8 ft	1356 sqft	90	90	120	72	-	40	46
<i>Regency 3</i>	29.5 x 48.2 x 11.8 ft	1420 sqft	90	90	120	72	-	40	54
<i>Regency 4</i>	29.5 x 48.2 x 11.8 ft	1420 sqft	90	90	120	72	-	40	54
<i>Regency 3-4</i>	59 x 48.2 11.8 ft	2852 sqft	200	200	240	150	-	60	70
<i>Regency 2-3-4</i>	87.2 x 48.2 x 11.8 ft	4208 sqft	300	300	400	260	-	90	100
TICUL	13.7 x 21.3 x 8.2 ft	290 sqft	12	-	12	-	12	-	-
LOLTÚN	27.5 x 21.3 x 8.2 ft	581 sqft	-	-	-	-	14	-	-
IZAMAL	27.5 x 21.3 x 8.2 ft	581 sqft	30	30	40	24	26	22	26
NICTE - HA	27.5 x 21.3 x 8.2 ft	581 sqft	30	30	40	24	26	22	26
ZAZIL - HA	27.5 x 21.3 x 8.2 ft	581 sqft	30	30	40	24	26	22	26
CHICHEN ITZÁ	53.1 x 18.9 x 8.5 ft	1011 sqft	80	60	96	60	-	50	55
<i>Chichen Itzá 1</i>	26.5 x 18.9 x 8.5 ft	505 sqft	30	30	40	24	26	22	26
<i>Chichen Itzá 2</i>	26.5 x 18.9 x 8.5 ft	505 sqft	30	30	40	24	26	22	26
UXMAL	53.1 x 18.9 x 8.5 ft	1011 sqft	80	60	96	60	-	50	55
<i>Uxmal 1</i>	26.5 x 18.9 x 8.5 ft	505 sqft	30	30	40	24	26	22	26
<i>Uxmal 2</i>	26.5 x 18.9 x 8.5 ft	505 sqft	30	30	40	24	26	22	26

GALLERY

Hyatt Regency Merida

August 2016 | Confidential & Proprietary

Lobby



HYATT
REGENCY
MÉRIDA



HYATT
REGENCY
MÉRIDA



HYATT
REGENCY
MÉRIDA





HYATT
REGENCY
MÉRIDA

Pool







HYATT
REGENCY
MÉRIDA

Standard Guest Room





HYATT
REGENCY
MÉRIDA

Regency Club Guest Room





HYATT
REGENCY
MERIDA

Executive Suite



Presidential Suite







Regency Club



HYATT
REGENCY
MÉRIDA





Meeting Rooms



HYATT
REGENCY
MERIDA



HYATT
REGENCY
MÉRIDA





HYATT
REGENCY
MERIDA

AMUZA Restaurant



HYATT
REGENCY
MÉRIDA



HYATT
REGENCY
MÉRIDA



HYATT
REGENCY
MÉRIDA

Peregrina Bistro



HYATT
REGENCY
MÉRIDA





Peregrina Kids Club



HYATT
REGENCY
MÉRIDA

Papillon French Bakery

