



GRAND | HYATT™

GRAND HYATT KUALA LUMPUR

1 MAY 2018



HOTEL PRESENTATION



GRAND HYATT KUALA LUMPUR

Opened its doors in Malaysia on 24 August 2012 and features 411 spacious guestrooms, including 42 suites

HOTEL VALUE PROPOSITION

Grand Hyatt Kuala Lumpur
*exists as the **centre stage***
*to **celebrate extraordinary***
experiences** with **authentic
Malaysian hospitality.





HOTEL STORY

Before Kuala Lumpur was reimagined to become today's Golden Triangle, the symbolic destination for the capital of Malaysia – the city's heart was originally home to a long history of tin-mining industry and popular nightlife precinct, soon after adjourning to develop into a thriving economic centre.

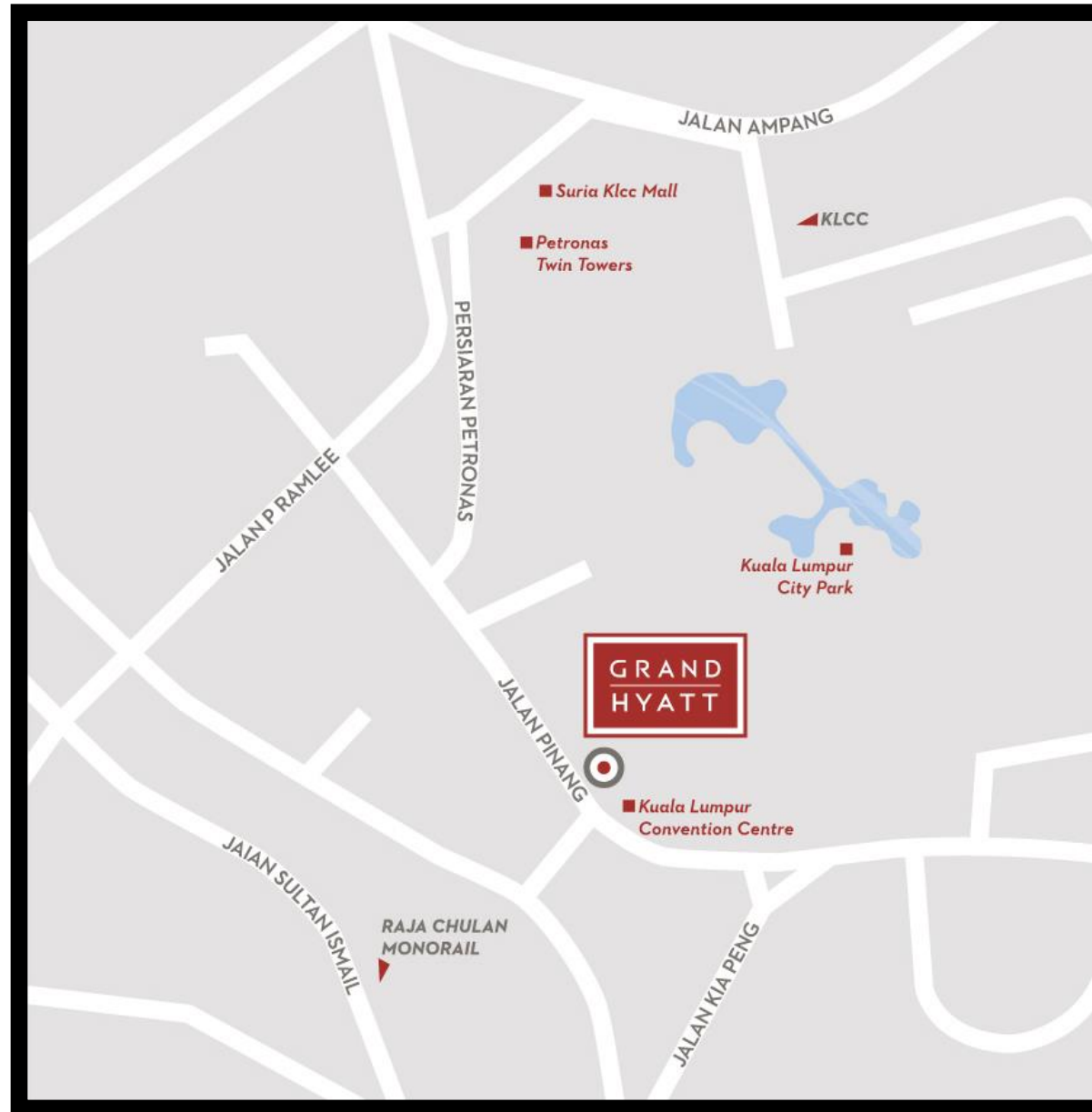
Situated in the Golden Triangle, Grand Hyatt Kuala Lumpur is the **centre stage** where every guests gathers to **celebrate extraordinary experiences** and soak in all the luxury that Grand Hyatt has to offer. Being a Malaysian gem offering breath-taking 360-degree views of Kuala Lumpur city skyline and upscale, spacious guestrooms, we become **an oasis to discerning business and leisure travellers** amidst the bustling city.

Complete with magnificent oval-shaped ballrooms adorned with brilliant crystal chandeliers, unique dining experience and instilled with authentic Malaysian hospitality, we are the **heart of all excitement** where **grand celebrations** are – **ready to impress** anytime.

LOCATION

The heart of Kuala Lumpur

- Adjacent to the Kuala Lumpur Convention Centre (KLCC)
- Walking distance to the Petronas Twin Towers, KLCC Park, Suria KLCC Shopping Centre, Dewan Filharmonik Petronas
- 10 minutes walk via sky-bridge to Golden Triangle and The Pavilion Shopping Centre
- 60 minutes drive from Kuala Lumpur International Airport (KLIA & KLIA2)



HISTORY OF THIS CITY

The heart of Kuala Lumpur



- Few decades ago, Kuala Lumpur was a tin-mining settlement spanning the Klang River and Gombak River or **previously known as “Muddy River”** – hence, how the name Kuala Lumpur came up, which means Muddy Estuary.
- In the late 80s, the town went through successive destruction due to a civil war, which led to plaques, fire and floods. Kapitan Yap Ah Loy played a pivotal role in rebuilding the town and developed Kuala Lumpur to become a **tin-mining settlement**, and after, as the **economic centre of the Malayan Peninsula**.
- The building site was **originally a turf club** (horse racing ground known as The Selangor Turf Club). The original turf club site was cleared for the construction of Petronas Twin Towers in 1997 and adjoining Kuala Lumpur city centre mega-project.
- **Surrounding area were night clubs, transformed from old bungalows.**



SKY LOBBY

Uniquely located on the highest floor of the building - directly accessible via dedicated express lifts which open to breath-taking panoramic views of the Petronas Twin Towers

ROOMS



GRAND ROOM

Rooms with floor-to-ceiling windows – the largest entry level room amongst five-star hotels in the city, measuring 47 square metres



GRAND DELUXE

All Grand Deluxe are corner rooms measuring 65 square metres each, offers a 180-degree view of either the iconic Petronas Twin Towers or downtown Kuala Lumpur



GRAND SUITE

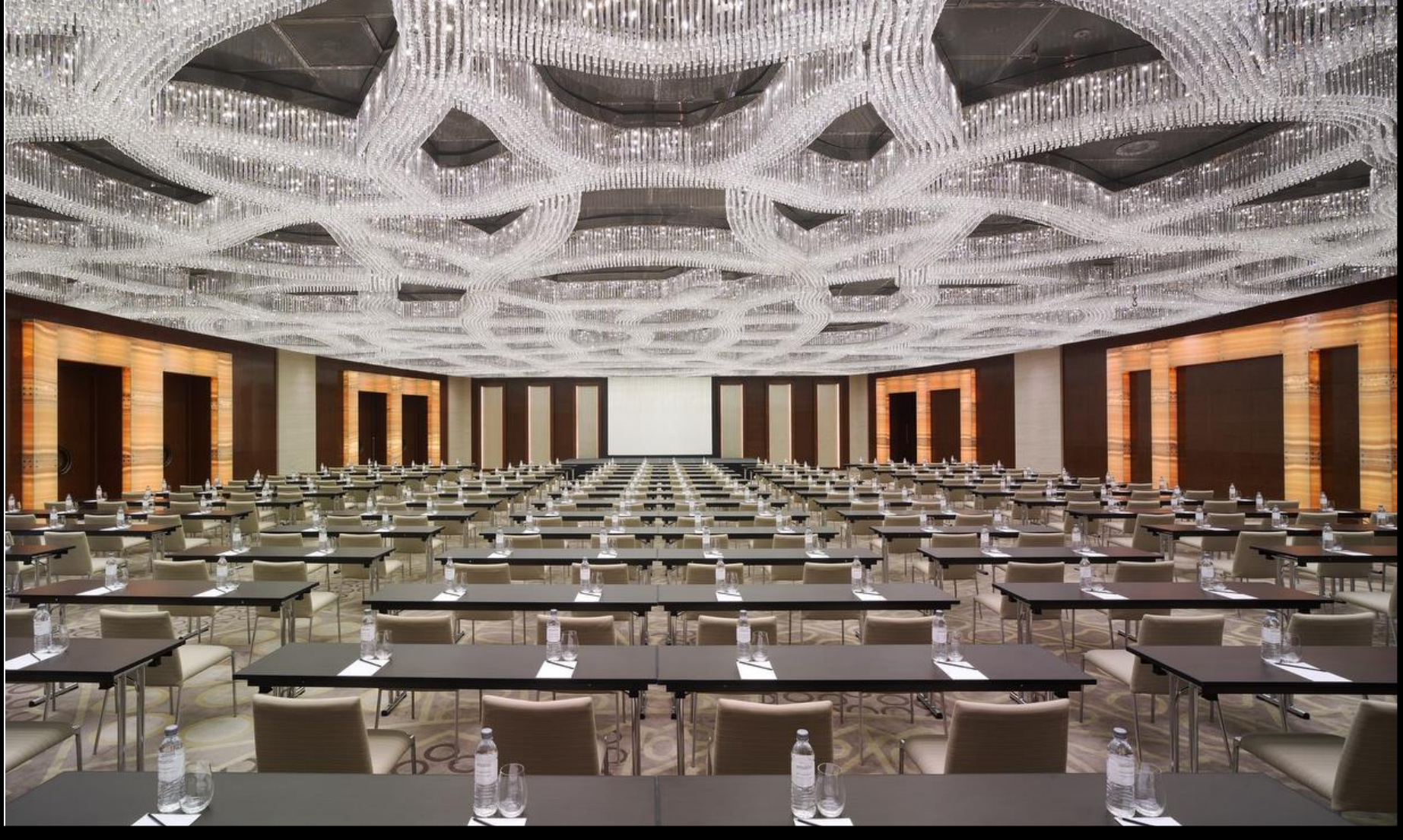
All Grand Suites are located in the corners and measure 105 square metres each, overlooking either the iconic Petronas Twin Towers or downtown Kuala Lumpur



GRAND CLUB

- *Access to dedicated private lounge only for guests in Club Rooms and Suites*
- *Personalised check-in and Concierge Service*
- *Grand Club Business Centre*

EVENT SPACES

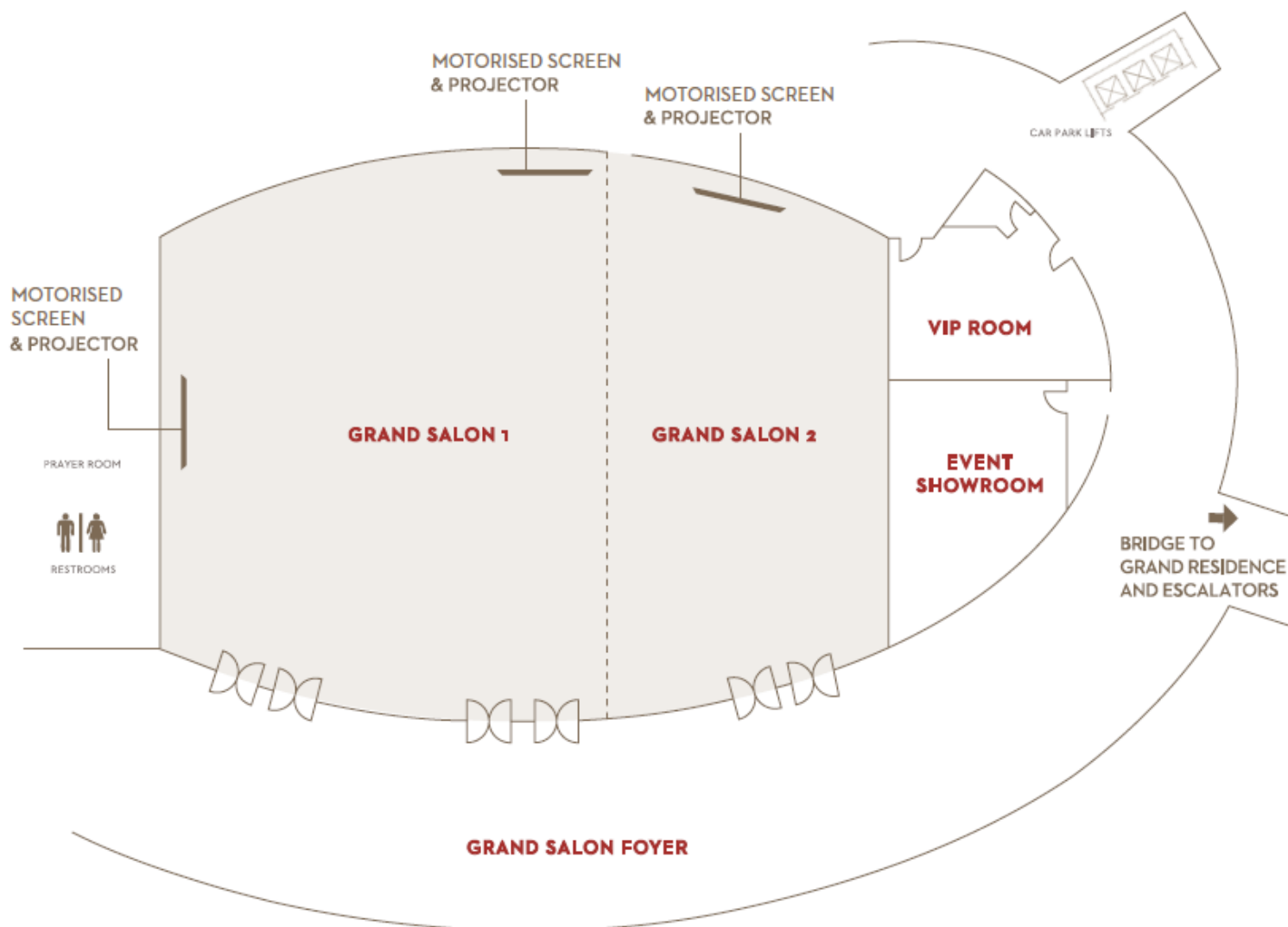


GRAND SALON

- *620 square metres of pillar-less event space with clear ceiling height of 4.5 metres*
- *Perfect venue for cosy meetings, conferences and weddings*
- *Elegant LED chandeliers and partitioning features for flexibility of space*
- *Foyer area suitable for pre-dinner cocktails*

FLOOR PLAN

Level 1 – Grand Salon



The Grand Salon, with its 620 square metres of space and clear ceiling height of 4.5 metres is an excellent venue for cosy meetings, conferences and weddings, hosting up to 450 guests. Pre-dinner cocktails can also be arranged at the foyer area.

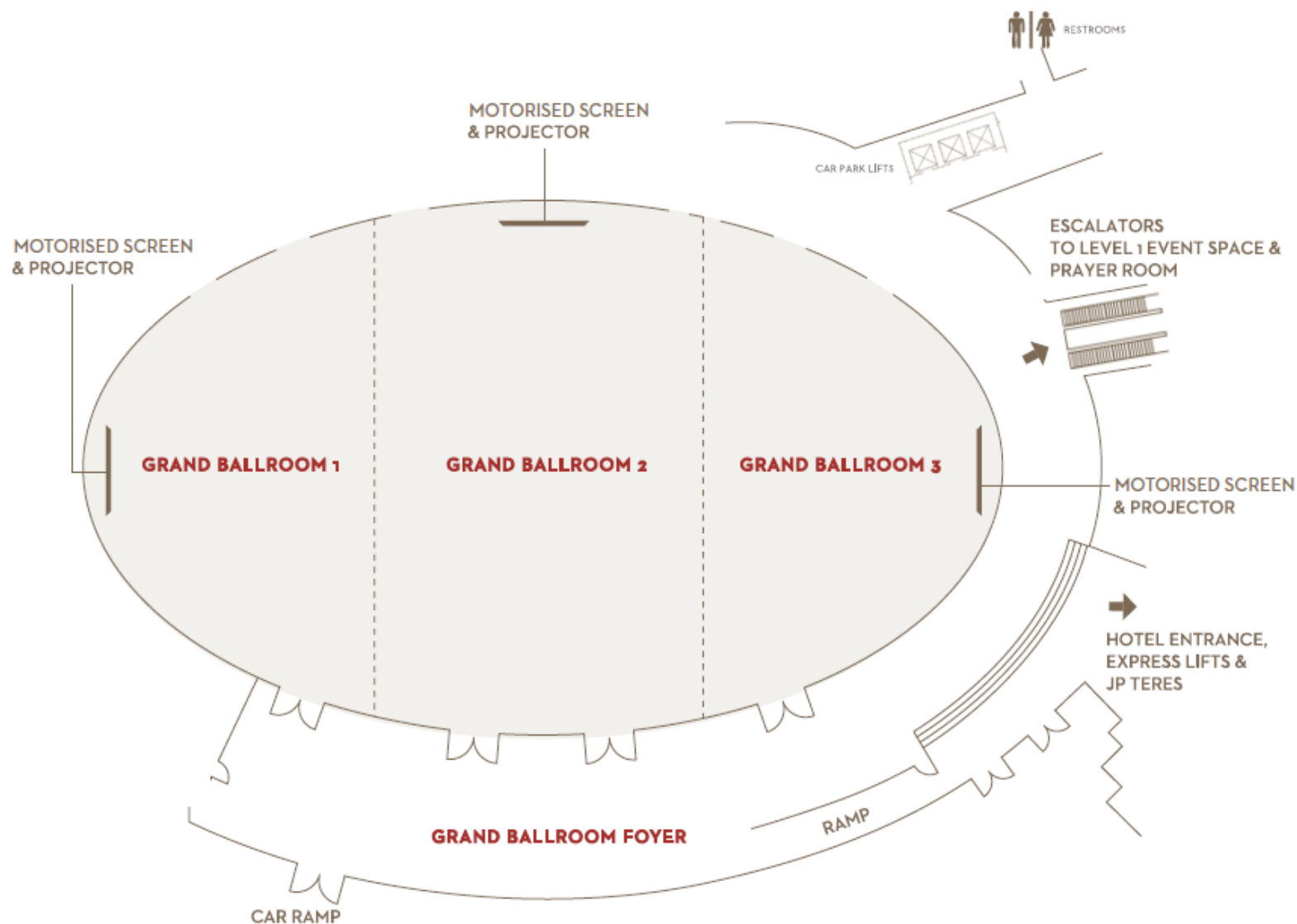


GRAND BALLROOM

- *Pillar-less event space of 1,045 square metres and clear ceiling height of 6.7 metres*
- *Ideal venue for gala events, annual dinners, car launches or large-scale weddings*
- *Equipped with Full High Definition projectors and modern LED chandeliers*
- *Foyer area suitable for pre-dinner cocktails*

FLOOR PLAN

Ground Level – Grand Ballroom



With a space of 1,045 square metres and a clear ceiling height of 6.7 metres, the Grand Ballroom is an ideal venue for gala events, annual dinners, car launches or large-scale weddings, catering up to 700 guests. The foyer area which is suitable for pre-dinner cocktails also includes a ramp where cars can be driven in for display during an event.

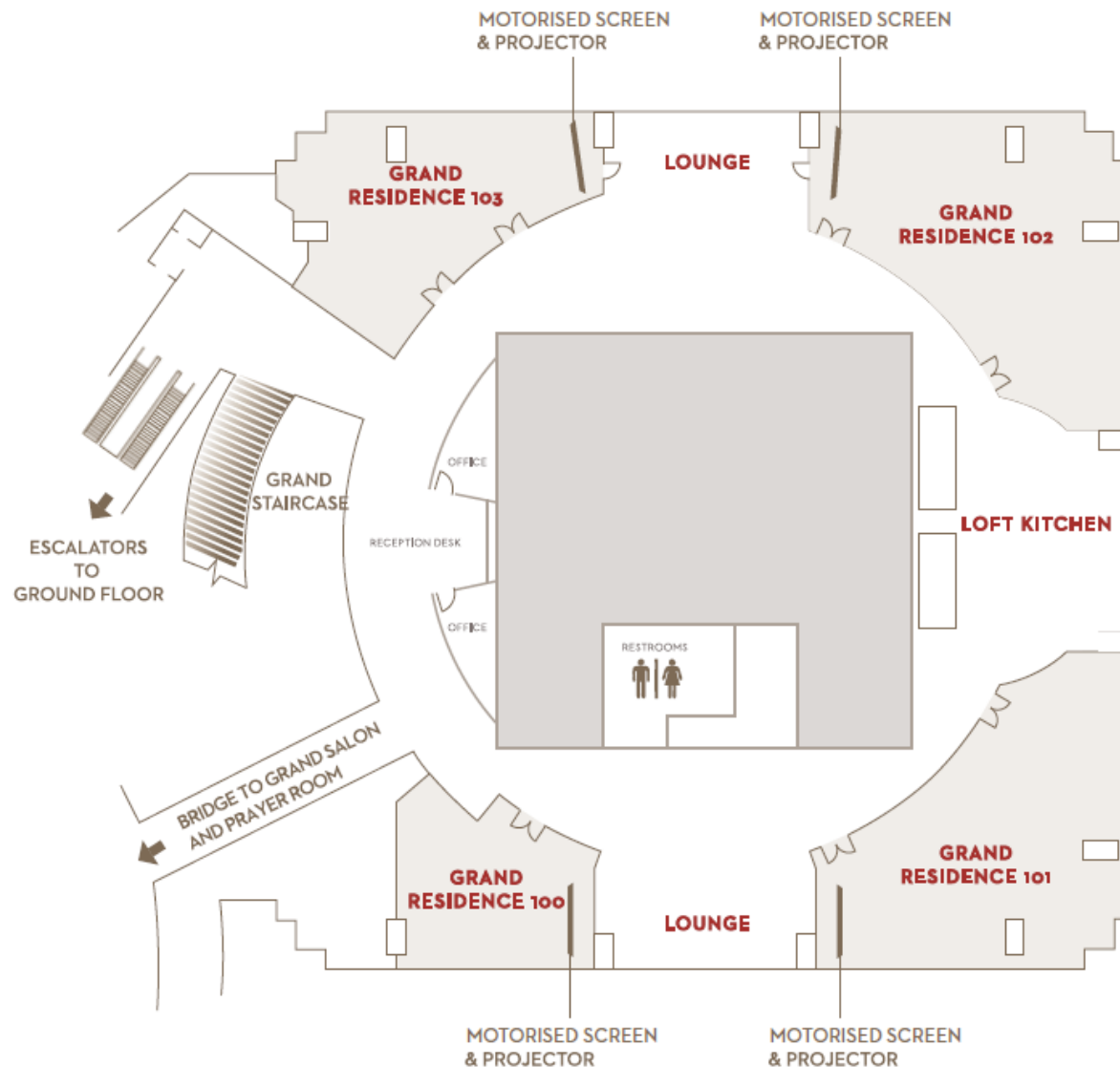


GRAND RESIDENCES

- *Houses two lounges, a loft kitchen and four private rooms with natural daylight*
- *Offers out-of-the-box experience and suitable to accommodate smaller-scale meetings, cocktail receptions, intimate weddings and cooking demonstrations*

FLOOR PLAN

Level 1 – Grand Residence



An all-encompassing event venue, the Grand Residence on Level 1 houses two lounges, a loft kitchen and four private rooms with natural daylight. With capacity ranging from 10 to 100 guests per room, this signature venue offers an out-of-the-box experience and is suitable to accommodate smaller-scale meetings, cocktail receptions, intimate weddings and cooking demonstrations.

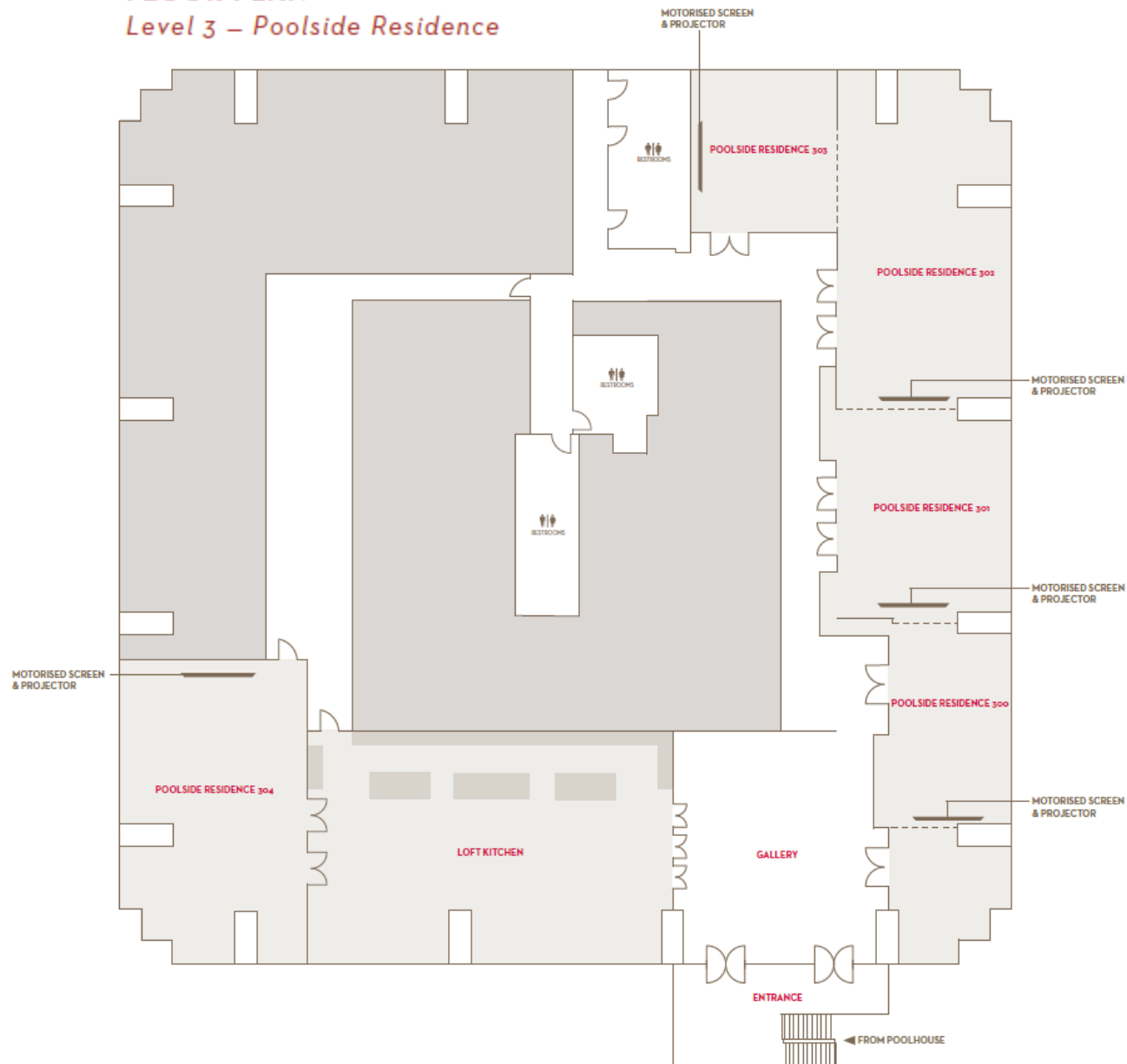


POOLSIDE RESIDENCE

Five sophisticated residential-styled rooms spanning over 465 square metres, perfectly ideal to host private occasions. Overlooks swimming pool and Petronas Twin Towers view.

FLOOR PLAN

Level 3 – Poolside Residence

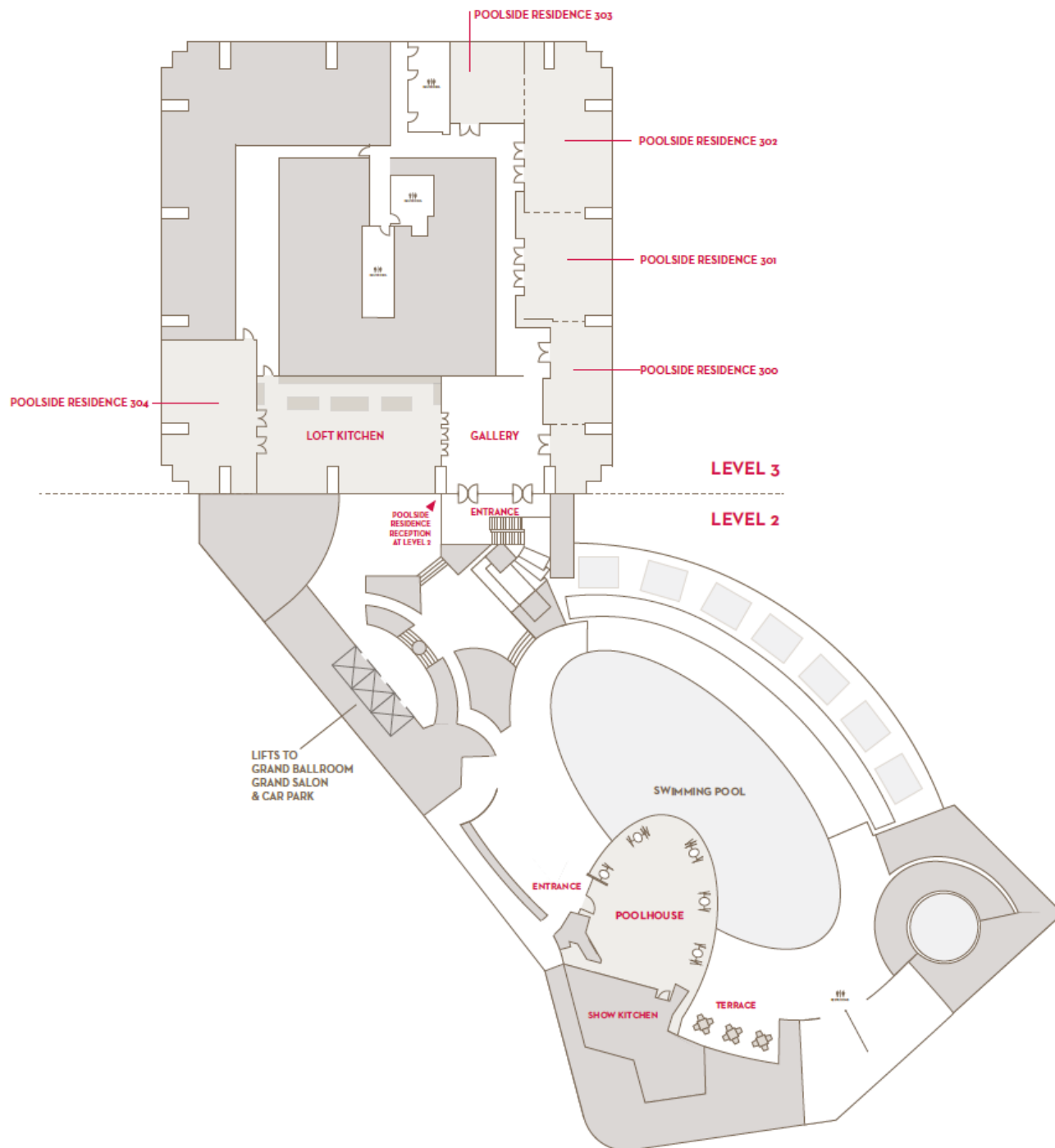


Poolside Residence is a collection of five private event rooms – Poolside Residence 300, 301, 302, 303 and 304 surrounded by the Gallery and the Loft Kitchen. With floor-to-ceiling windows throughout, the Poolside Residence is a modern and versatile residential-style event space spanning over 765 square metres.

FLOOR PLAN

Level 2 – Poolhouse

Level 3 – Poolside Reside



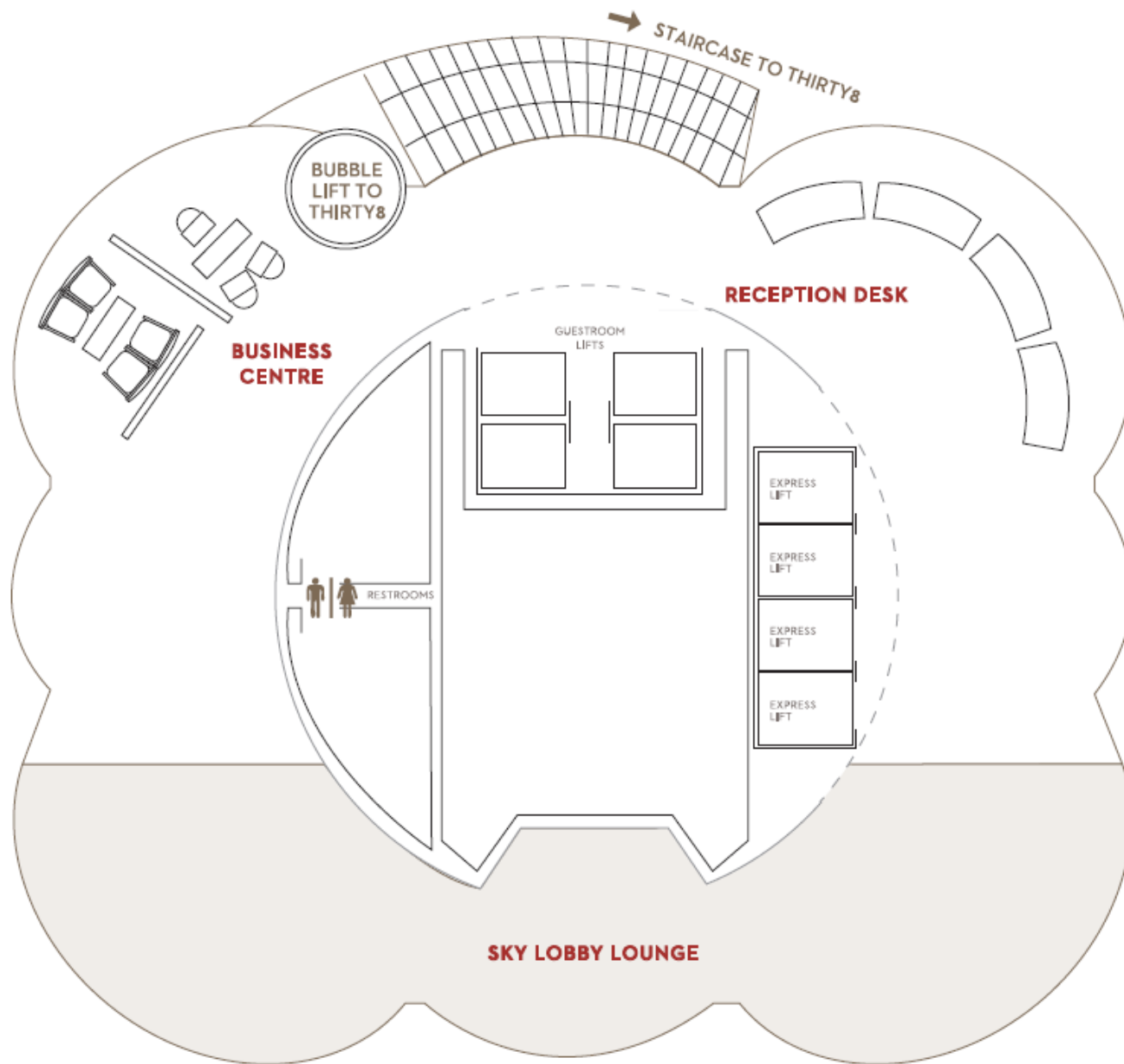


SKY LOBBY LOUNGE

Perfectly set against the Petronas Twin Towers' view for cocktail parties, lunches and dinners, suitable for up to 120 persons

FLOOR PLAN

Level 38M – Sky Lobby Lounge



PETRONAS
TWIN
TOWERS
VIEW



CAPACITY CHART



ROOM NAME	ROOM DIMENSIONS L X W X H	ROOM SIZE SQ. FT. / SQ. M.	BANQUET	RECEPTION	THEATRE	CLASSROOM	BOARDROOM	U-SHAPE	HOLLOW SQUARE	EXHIBIT
Ground Level										
GRAND BALLROOM	154.19' x 90.87' x 22' 47m x 27.7m x 6.7m	11,248 1,045	700	1,450	1,300	600	—	—	—	—
<i>Grand Ballroom 1</i>	48.55' x 85.3' x 22' 14.8m x 26m x 6.7m	3,231 300	190	480	400	140	30	60	60	—
<i>Grand Ballroom 2</i>	56.1' x 85.3' x 22' 17.1m x 26m x 6.7m	4,785 445	320	480	500	210	50	60	80	—
<i>Grand Ballroom 3</i>	48.55' x 85.30' x 22' 14.8m x 26m x 6.7m	3,231 300	190	480	400	140	30	60	60	—
<i>Grand Ballroom 1 + 2</i>	104.65' x 85.3' x 22' 31.9m x 26m x 6.7m	8,016 745	510	960	900	350	80	120	140	—
<i>Grand Ballroom 2 + 3</i>	104.65' x 85.3' x 22' 31.9m x 26m x 6.7m	8,016 745	510	960	900	350	80	120	140	—
Level 1										
GRAND SALON	94' x 74' x 14.8' 28.8m x 22.6m x 4.5m	6,956 620	450	650	700	300	80	90	120	—
<i>Grand Salon 1</i>	59.38' x 74' x 14.8' 18.1m x 22.6m x 4.5m	4,394 420	240	550	450	180	60	60	80	—
<i>Grand Salon 2</i>	35.43' x 74' x 14.8' 10.8m x 22.6m x 4.5m	2,621 200	150	280	220	120	60	72	84	—
GRAND RESIDENCE 100	32.15' x 7.1' x 15.7' 9.8m x 8.1m x 4.8m	807 75	20	40	40	20	12	15	—	—
GRAND RESIDENCE 101	50.85' x 40.5' x 15.7' 15.5m x 12.1m x 4.8m	1,830 170	60	100	100	50	20	34	24	—
GRAND RESIDENCE 102	50.85' x 40.5' x 15.7' 15.5m x 12.1m x 4.8m	1,830 170	60	100	100	50	20	34	24	—
GRAND RESIDENCE 103	52.49' x 39.8' x 15.7' 16m x 8m x 4.8m	1,292 120	40	80	60	40	16	18	21	—

CAPACITY CHART



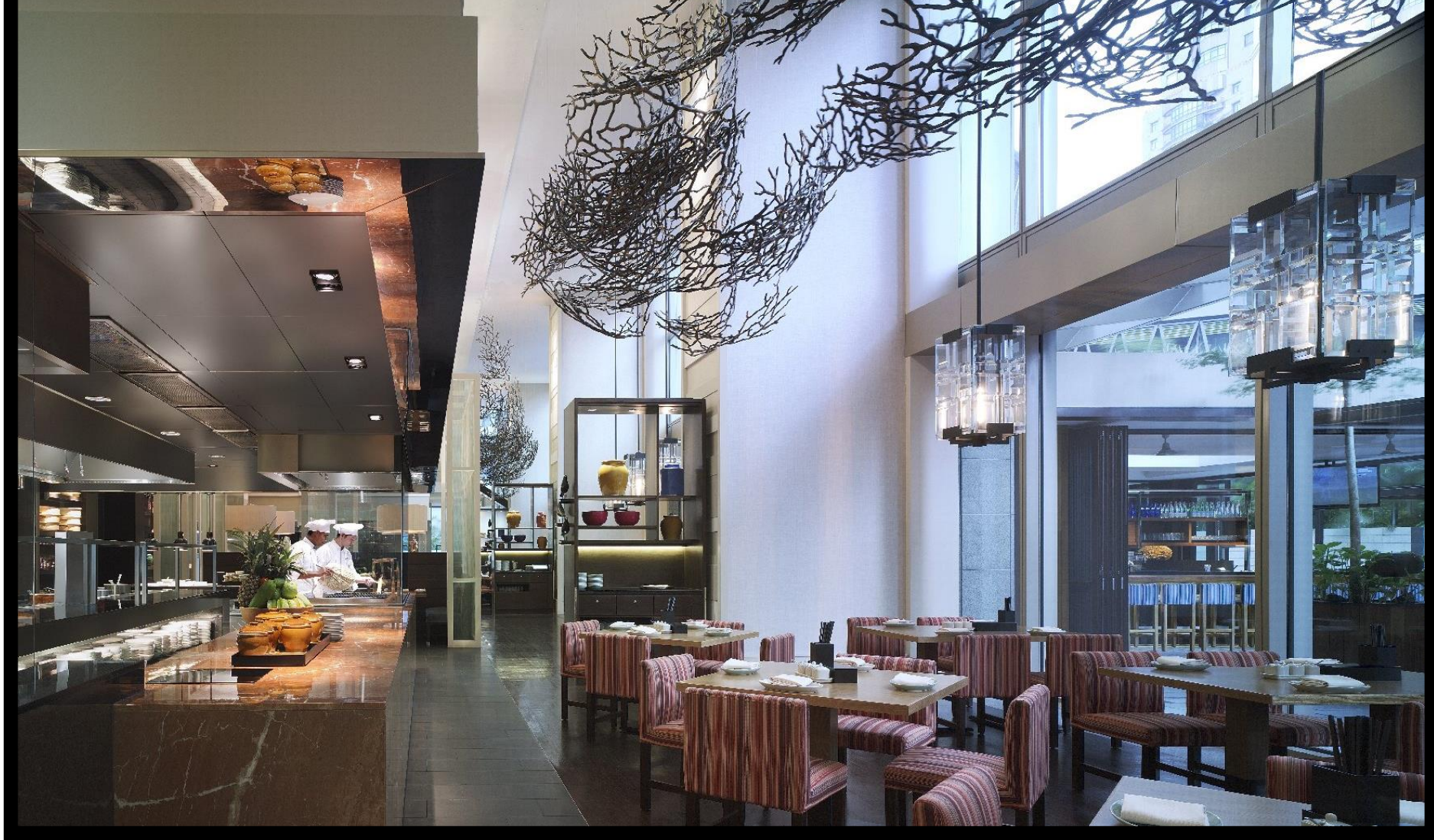
ROOM NAME	ROOM DIMENSIONS L X W X H	ROOM SIZE SQ. FT. / SQ. M.	BANQUET	RECEPTION	THEATRE	CLASSROOM	BOARDROOM	U-SHAPE	HOLLOW SQUARE	EXHIBIT
Level 2										
POOLHOUSE	50.4' x 37.53' x 11.67' 15.36m x 11.44m x 3.56m	1,614 150	54	—	—	—	—	—	—	—
Level 3										
POOLSIDE RESIDENCE 300	32.19' x 18.96' x 9.18' 9.81m x 5.78m x 2.8m	645 60	30	60	40	16	18	14	—	—
POOLSIDE RESIDENCE 301	33.96' x 27.07' x 9.18' 10.35m x 8.25m x 2.8m	915 85	50	70	70	32	18	20	—	—
POOLSIDE RESIDENCE 302	53.41' x 27.1' x 9.18' 16.28m x 8.26m x 2.8m	1,453 135	70	80	110	48	20	20	—	—
POOLSIDE RESIDENCE 303	24.7' x 22.77' x 9.18' 7.53m x 6.94m x 2.8m	592 55	30	—	30	12	12	12	—	—
POOLSIDE RESIDENCE 304	47.57' x 28.05' x 9.18' 14.5m x 8.85m x 2.8m	1,400 130	50	80	100	40	18	18	—	—
POOLSIDE RESIDENCE 301 + 302	87.37' x 27.1' x 9.18' 26.63m x 8.26m x 2.8m	2368 220	130	160	200	54	40	44	—	—
Sky Lobby										
SKY LOBBY LOUNGE	98.4' x 19.7' x 11.8' 30m x 6m x 3.6m	1,938 180	120	150	—	—	—	—	—	—

DINING & SPA



THIRTY8

- *Offers a 360-degree view of the city skyline. Serves a selection of Western, Chinese and Japanese cuisine such as steaks, seafood, sushi and sashimi*
- *Hosting a private event can be arranged*



JP TERES

An authentic dining place featuring the best of local Malaysian cuisine, ideal for a social gathering with business associates, families and friends



POOLHOUSE

A stunning glasshouse next to the swimming pool and surrounded by lush greenery which serves both local and international favourites.



SWIMMING POOL

Outdoor swimming pool surrounded with lush greenery, complemented with a tailored-made simple and healthy balanced menu.



ESSA SPA

Features 11 treatment suites, including 2 couple suites, each fitted with a massage bed and an integrated washroom with shower

AWARDS & ACCOLADES



TripAdvisor™

2018 Travellers' Choice Award Winner

Top 25 Luxury Hotels in Malaysia

Top 25 Hotels for Service in Malaysia

Top 25 Hotels in Malaysia



TripAdvisor™

2017 Certificate of Excellence



**Smart Travel Asia,
2017 Best In Travel Poll**

Top 10 Ranked Conference and
Business Hotels in Asia



**2015 Business Traveller
Asia-Pacific Award**

Best Business Hotel in Kuala Lumpur



Expatriate Lifestyle

2015 Best Of Malaysia Awards

Best Hotel Dining & Entertainment

Experience Winner, THIRTY8
and Best Short Stay Excellence Award

AWARDS & ACCOLADES



TripAdvisor™ 2017



Travellers' Choice™ 2017 Winner
Restaurants



Certificate of Excellence
THIRTY8
○○○○○



TripAdvisor™ 2017



Certificate of Excellence
JP teres
○○○○○



Harper's BAZAAR Malaysia,
Spa Awards 2018
Top To Toe Award, Essa Spa
RENEW Treatment

WORLD O F HYATT

Your new loyalty program connects you to the people, places and experiences at the heart of your world.

01

EARN

Earn points for things you already enjoy at Hyatt – from stays, to dining, to indulgent spa experiences. You'll earn **5 Base Points** for every eligible U.S. dollar you spend.



02

REDEEM

Explore, indulge or just relax. You can use your points on ***free nights, room upgrades, dining, airline miles*** and more.



03

ACHIEVE

Uncover more rewards and ***elite privileges*** when you meet qualifying criteria each calendar year.

MEMBER ► DISCOVERIST ► EXPLORIST ► GLOBALIST



For more info, visit <https://world.hyatt.com/>

SUMMARY

Starting from

47
SQM

*Largest entry level room
amongst five-star hotels
within KLCC vicinity*



**Floor-to-ceiling
windows**

*Stunning view of
PETRONAS Twin Tower
and/or KL city skyline*



*Strategically located
in the heart of
Kuala Lumpur*



360°
VIEW

*THIRTY8 offers a
360-degree view of the
city skyline*



*What do people say
about us?
(HySat & social media)*

GUEST ROOM – *excellent, spacious, clean*

VIEW – *stunning, amazing*

SERVICE – *outstanding, helpful, friendly, courteous*

FOOD & BEVERAGE – *fantastic, great, breakfast buffet*

LOCATION – *centrally located, convenient*



Top rated hotel in Kuala Lumpur (TripAdvisor)

7 event spaces

3,300
SQM

*7 highly versatile venues
– over 3,300 SQM of
meeting & event space*

ADDITIONAL INFORMATION

TRANSPORTATION

- 10 minutes walk to the nearest Light Rail Transit (KLCC Station)
- 20 minutes by car to the nearest Express Rail Link (KL Sentral Station)
- 60 minute drive from the Kuala Lumpur International Airport (KLIA & KLIA2)

VISITOR INFORMATION

- Complimentary high-speed Wi-Fi in all social spaces and event spaces
- Airport limousine and transfer
- Parking for up to 400 vehicles with valet service
- Business Centre
- Foreign currency exchange service
- 24-hour Concierge and 24-hour Room Service
- Express check-out

POINTS OF INTEREST

- | | | |
|----------------------------|---------------------------------------|------------------------|
| • Petronas Twin Towers | • Pavilion Kuala Lumpur Shopping Mall | • KL Bird Park |
| • Suria KLCC Shopping Mall | • KL Tower | • Central Market KL |
| • Aquaria KLCC | • Petaling Street Chinatown | • KL Convention Centre |
| • KLCC Park | • Batu Caves | |



THANK YOU